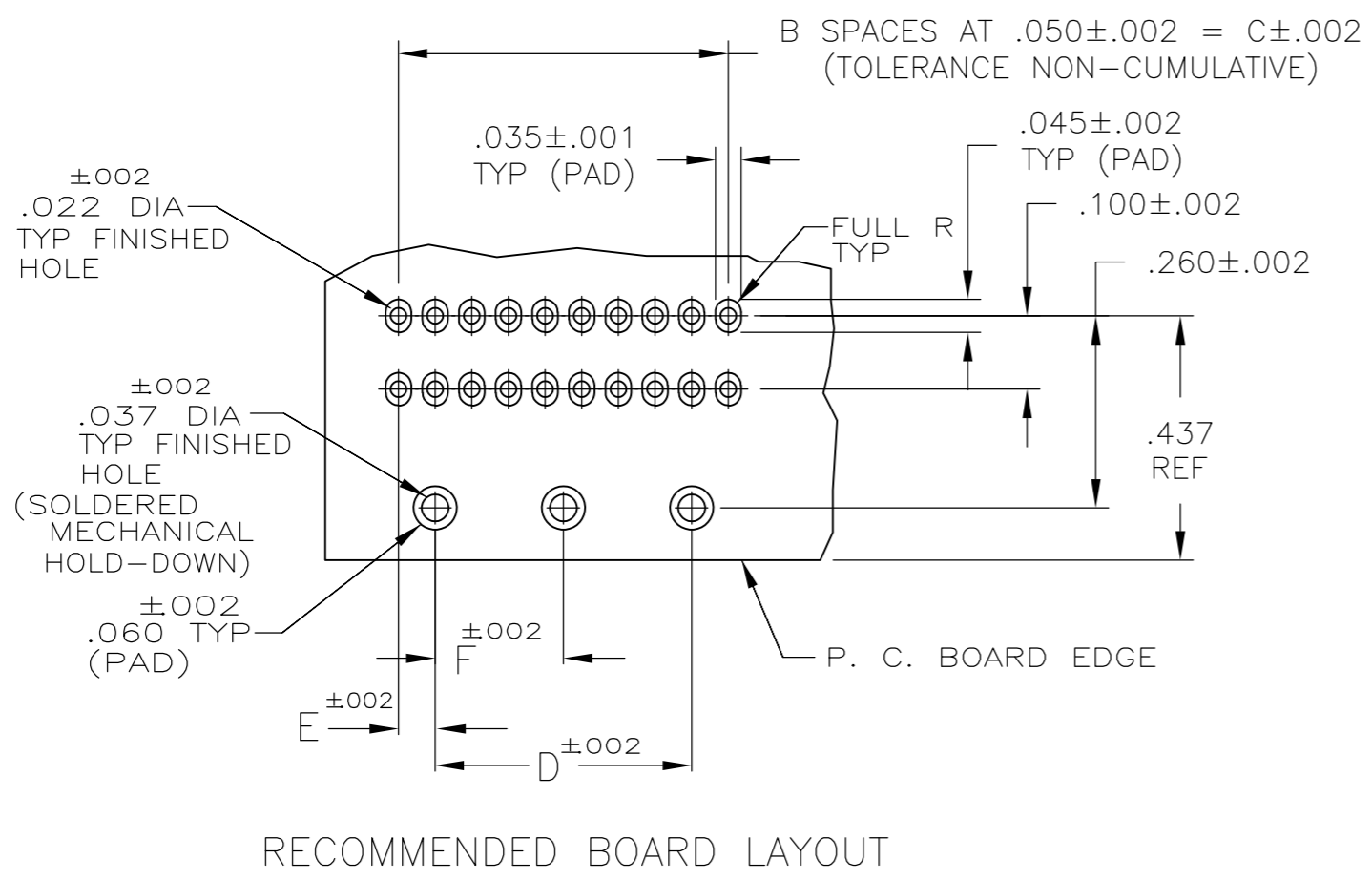
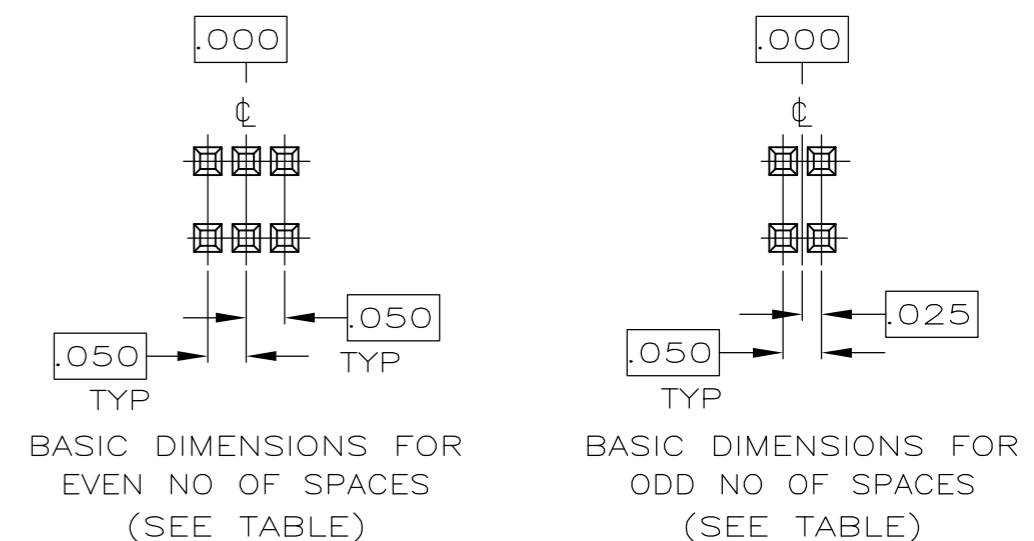
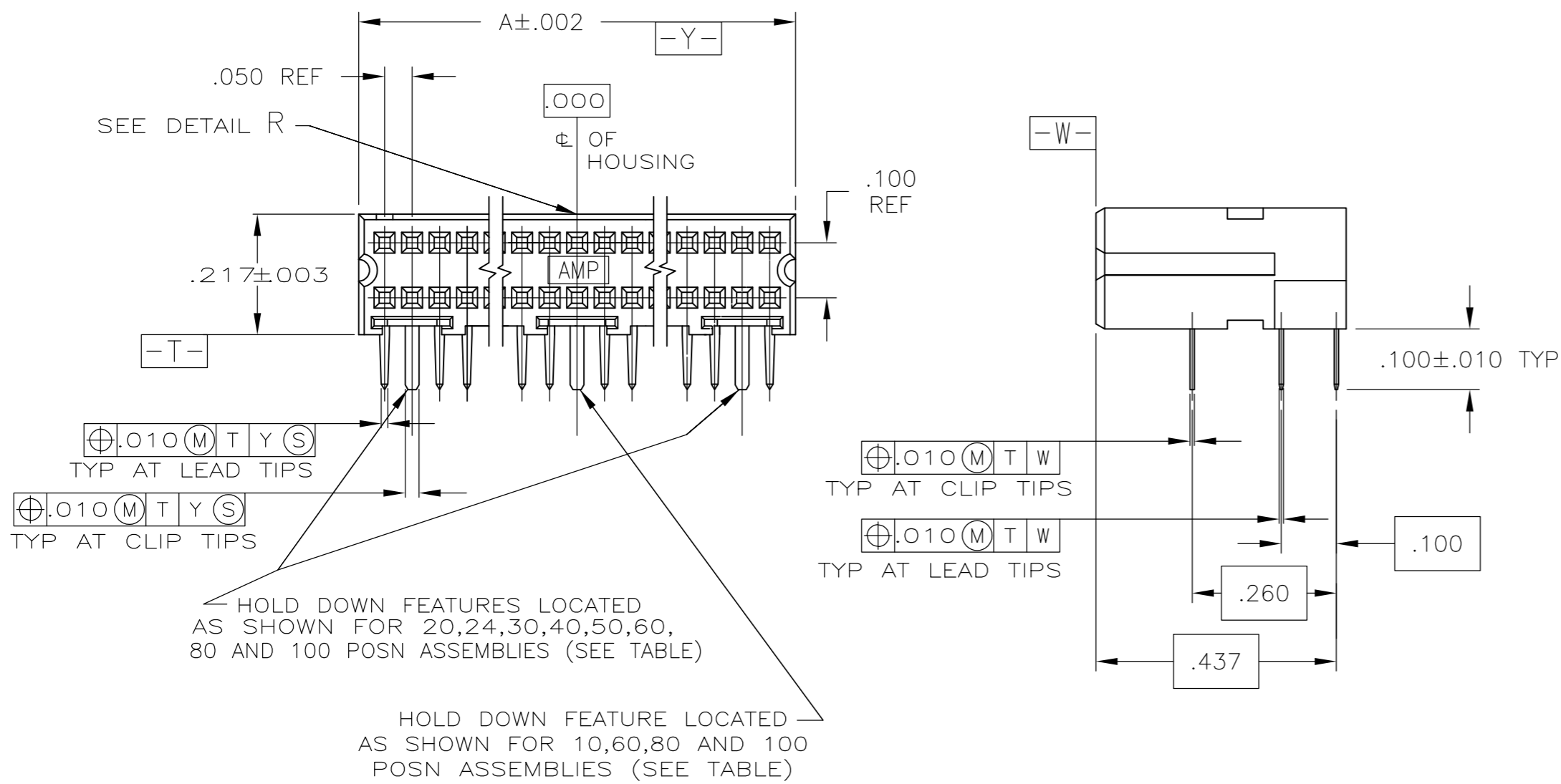
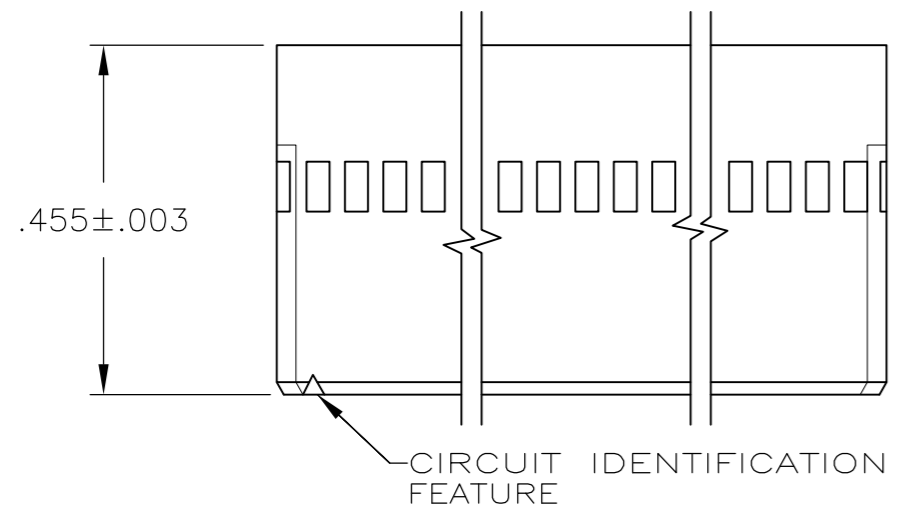


THIS DRAWING IS UNPUBLISHED. RELEASED FOR PUBLICATION  
 © COPYRIGHT - By - ALL RIGHTS RESERVED.

| LOC | DIST | REVISIONS   |                           |           |       |
|-----|------|-------------|---------------------------|-----------|-------|
| P   | LTR  | DESCRIPTION | DATE                      | DWN       | APVD  |
| AD  | 39   | M           | REVISED PER ECO-14-004696 | 08APR2014 | NK JO |



|   |  |                  |            |          |  |                 |            |           |  |
|---|--|------------------|------------|----------|--|-----------------|------------|-----------|--|
| THIS DRAWING IS A CONTROLLED DOCUMENT.  |  | DWN              | D CLOUSER  | 3-20-86  |  | TE Connectivity |            |           |  |
| DIMENSIONS: INCHES  |  | CHK              | J S STARON | 3-20-86  |  | NAME            |            |           |  |
| TOLERANCES UNLESS OTHERWISE SPECIFIED:  |  | APVD             | J S STARON | 3-20-86  |  | PRODUCT SPEC    |            |           |  |
| 0 PLC ± -<br>1 PLC ± -<br>2 PLC ± -<br>3 PLC ± -<br>4 PLC ± -<br>ANGLES ± -<br>FINISH SEE TABLE |  | APPLICATION SPEC |            | 108-1093 |  | RESTRICTED TO   |            |           |  |
| MATERIAL  |  | WEIGHT           |            | SIZE     |  | CAGE CODE       | DRAWING NO | REVISIONS |  |
| 3   |  | -                |            | A2       |  | 00779           | C=103911   | -         |  |
|   |  | CUSTOMER DRAWING |            | SCALE    |  | SHEET           |            | REV       |  |
|   |  |                  |            | 4:1      |  | 1 of 2          |            | M         |  |


THIS DRAWING IS UNPUBLISHED. RELEASED FOR PUBLICATION  
 © COPYRIGHT - By - ALL RIGHTS RESERVED.

| LOC | DIST | REVISIONS |     |             |      |     |      |
|-----|------|-----------|-----|-------------|------|-----|------|
| AD  | 39   | P         | LTR | DESCRIPTION | DATE | DWN | APVD |
|     |      | -         |     | SEE SHEET 1 | -    | -   | -    |

- ① CONTACT AREA PLATED WITH .000030 GOLD; SOLDER CLIPS AND LEADS PLATED WITH .000150 TIN-LEAD; ALL OVER .000050 NICKEL
- ② POINT OF MEASUREMENT FOR GOLD THICKNESS IS .030 FROM MATING END OF CONTACT
- ③ HOUSING: THERMOPLASTIC, COLOR-BLACK. CONTACT: COPPER ALLOY. SOLDER CLIP: PHOSPHOR BRONZE
- ④ CONTACT AREA PLATED WITH .000030 GOLD; SOLDER CLIPS AND LEADS PLATED WITH .000150 TIN ALL OVER .000050 NICKEL
- ⑤ PRELIMINARY - NOT FOR PRODUCTION
- ⑥ ROHS 2002/95/EC COMPLIANT
- ⑦ FINISH, .000001 MIN. GOLD ON GOLD PLATED AREA, .000150-.000250 MATTE TIN LEAD ON TIN PLATE AREA, UNDER PLATING SHOULD BE .000050-.000100 NICKEL ON ENTIRE CONTACT.
- ⑧ SUPERCEDED BY 5-103911-5
- ⑨ OBSOLETE PARTS: OBSOLETE CIS STREAMLINING PER D.RENAUD/D.SINISI
- ⑩ OBSOLETE
- ⑪ FINISH: .000001 MIN GOLD ON GOLD PLATED AREA. .000150-.000250 MATTE TIN ON TIN PLATED AREA. UNDER PLATING: .000050-.000100 NICKEL ON ENTIRE CONTACT

|        |       |      |       |       |      |       |            |             |            |
|--------|-------|------|-------|-------|------|-------|------------|-------------|------------|
| ①⑥     | -     | .050 | .450  | .550  | 11   | .644  | 24         | ⑤           | 7-103911-9 |
|        | 1.175 | .050 | 2.350 | 2.450 | 49   | 2.544 | 100        |             | 7-103911-8 |
|        | -     | .050 | .600  | .700  | 14   | .794  | 30         | ⑤           | 7-103911-7 |
|        | .925  | .050 | 1.850 | 1.950 | 39   | 2.044 | 80         | ⑤           | 7-103911-6 |
|        | -     | .050 | .850  | .950  | 19   | 1.044 | 40         | ⑤           | 7-103911-5 |
|        | -     | .050 | 1.100 | 1.200 | 24   | 1.294 | 50         | ⑤           | 7-103911-4 |
|        | .675  | .050 | 1.350 | 1.450 | 29   | 1.544 | 60         | ⑤           | 7-103911-3 |
| -      | .050  | .350 | .450  | 9     | .544 | 20    |            | 7-103911-2  |            |
| -      | .100  | -    | .200  | 4     | .294 | 10    | ⑤          | 7-103911-1  |            |
| ④⑥     | -     | .050 | .450  | .550  | 11   | .644  | 24         | ⑩           | 5-103911-9 |
|        | 1.175 | .050 | 2.350 | 2.450 | 49   | 2.544 | 100        |             | 5-103911-8 |
|        | -     | .050 | .600  | .700  | 14   | .794  | 30         |             | 5-103911-7 |
|        | .925  | .050 | 1.850 | 1.950 | 39   | 2.044 | 80         | ⑨           | 5-103911-6 |
|        | -     | .050 | .850  | .950  | 19   | 1.044 | 40         |             | 5-103911-5 |
|        | -     | .050 | 1.100 | 1.200 | 24   | 1.294 | 50         |             | 5-103911-4 |
|        | .675  | .050 | 1.350 | 1.450 | 29   | 1.544 | 60         |             | 5-103911-3 |
| -      | .050  | .350 | .450  | 9     | .544 | 20    |            | 5-103911-2  |            |
| -      | .100  | -    | .200  | 4     | .294 | 10    |            | 5-103911-1  |            |
| FINISH | F     | E    | D     | C     | B    | A     | NO OF POSN | PART NUMBER |            |

|        |       |      |       |       |      |       |            |             |            |
|--------|-------|------|-------|-------|------|-------|------------|-------------|------------|
| ⑦      | -     | .050 | .450  | .550  | 11   | .644  | 24         | ⑤           | 2-103911-9 |
|        | 1.175 | .050 | 2.350 | 2.450 | 49   | 2.544 | 100        | ⑤           | 2-103911-8 |
|        | -     | .050 | .600  | .700  | 14   | .794  | 30         | ⑤           | 2-103911-7 |
|        | .925  | .050 | 1.850 | 1.950 | 39   | 2.044 | 80         | ⑤           | 2-103911-6 |
|        | -     | .050 | .850  | .950  | 19   | 1.044 | 40         | ⑤           | 2-103911-5 |
|        | -     | .050 | 1.100 | 1.200 | 24   | 1.294 | 50         | ⑤           | 2-103911-4 |
|        | .675  | .050 | 1.350 | 1.450 | 29   | 1.544 | 60         | ⑤           | 2-103911-3 |
| -      | .050  | .350 | .450  | 9     | .544 | 20    | ⑤          | 2-103911-2  |            |
| -      | .100  | -    | .200  | 4     | .294 | 10    |            | 2-103911-1  |            |
| ①      | -     | .050 | .450  | .550  | 11   | .644  | 24         | ⑩           | 103911-9   |
|        | 1.175 | .050 | 2.350 | 2.450 | 49   | 2.544 | 100        |             | 103911-8   |
|        | -     | .050 | .600  | .700  | 14   | .794  | 30         |             | 103911-7   |
|        | .925  | .050 | 1.850 | 1.950 | 39   | 2.044 | 80         | ⑨           | 103911-6   |
|        | -     | .050 | .850  | .950  | 19   | 1.044 | 40         | ⑧           | 103911-5   |
|        | -     | .050 | 1.100 | 1.200 | 24   | 1.294 | 50         |             | 103911-4   |
|        | .675  | .050 | 1.350 | 1.450 | 29   | 1.544 | 60         |             | 103911-3   |
| -      | .050  | .350 | .450  | 9     | .544 | 20    |            | 103911-2    |            |
| -      | .100  | -    | .200  | 4     | .294 | 10    |            | 103911-1    |            |
| FINISH | F     | E    | D     | C     | B    | A     | NO OF POSN | PART NUMBER |            |

|   |  |                  |            |         |   |           |            |               |
|---|--|------------------|------------|---------|---|-----------|------------|---------------|
| THIS DRAWING IS A CONTROLLED DOCUMENT.                                      |  | DWN              | D CLOUSER  | 3-20-86 |  TE Connectivity |           |            |               |
| DIMENSIONS: INCHES  |  | CHK              | J S STARON | 3-20-86 |   |           |            |               |
| TOLERANCES UNLESS OTHERWISE SPECIFIED:                                      |  | APVD             | J S STARON | 3-20-86 |   |           |            |               |
| 0 PLC ± -<br>1 PLC ± -<br>2 PLC ± -<br>3 PLC ± -<br>4 PLC ± -<br>ANGLES ± - |  | PRODUCT SPEC     | 108-1093   |         |   |           |            |               |
| MATERIAL  |  | APPLICATION SPEC | 114-25031  |         | SIZE  | CAGE CODE | DRAWING NO | RESTRICTED TO |
| SEE TABLE   |  | WEIGHT           | -          |         | A2  | 00779     | C=103911   | -             |
| CUSTOMER DRAWING  |  |                  |            |         | SCALE   | 4:1       | SHEET      | 2 of 2        |
|   |  |                  |            |         | REV   | M         |            |               |